

L LENGTH TOLERANCE	$\leq 3/4$	+0	-0,03
	$> 3/4$ " to $\leq 1-1/2$ "	+0	-0,06
	$>1-1/2$ "	+0	-0,06

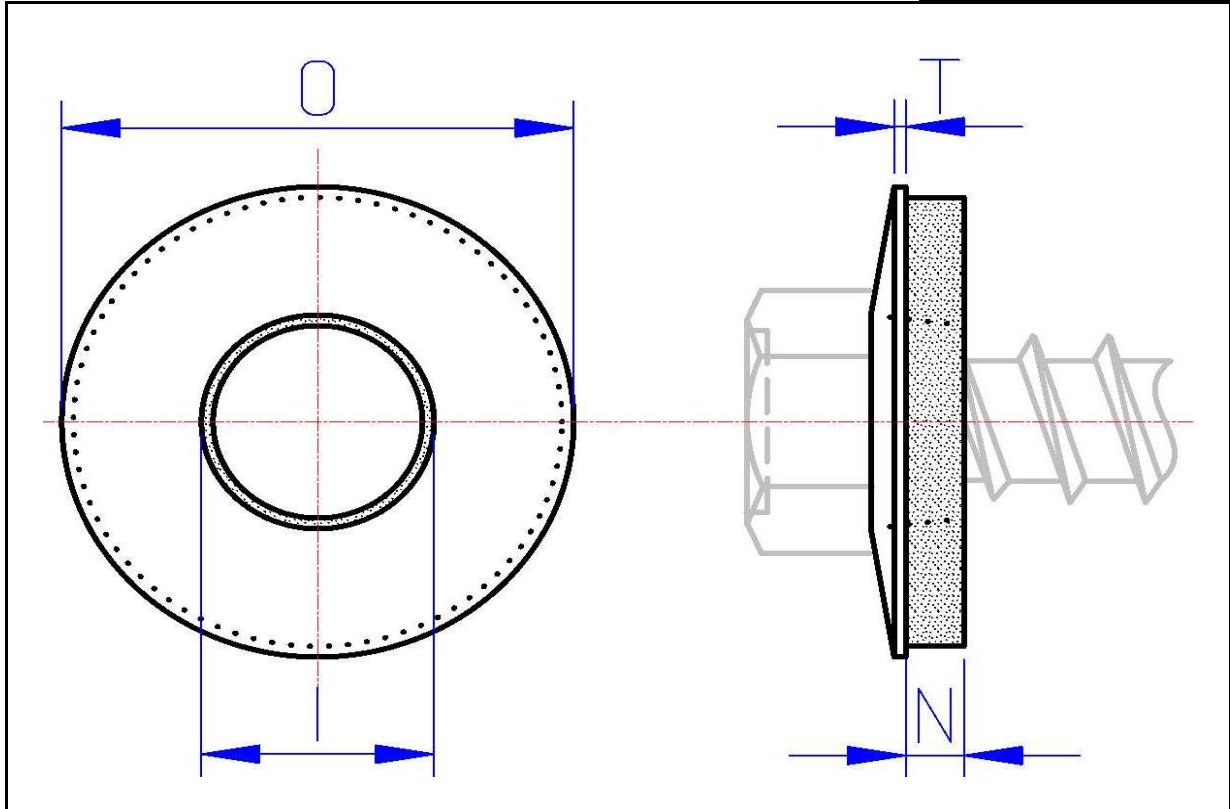
FULL THREAD

SCREW		W WASHER DIAM.	U WASHER THICK.	A ACROSS FLAT.	H HEAD HEIGHT.	d MINOR DIAM.	D MAJOR DIAM.	TEK SIZE	T POINT DIAM.	S POINT LENGTH	THREAD PER INCH	TORK INCH/POUND
# 8	Min	0,322	0,019	0,244	0,096	0,116	0,161	#2	0,131	0,188	18	42
	Max	0,348	0,031	0,250	0,110	0,122	0,166		0,136	0,211		

**Indented Hex Washer head, Self Drilling "TEK" screw, Zinc Plated
assembled with Dish Bonded Washer (see page 2)**

Date : 29 octobre 2015

Done by : P.B.



unit: INCH

SCREW SIZE		ID INSIDE DIAM.	OD OUTSIDE DIAM.	T PLATE THICKNESS	N NEOPREN THICKNESS
# 8	Min	0.200	0.470	0.025	0.058
	Max	0.210	0.490	0.035	0.075

DISH BONDED WASHER (EPDM)
 ID is for steel plate only and does not concern the EPDM washer

Date: October 29, 2015

Fait par: P.B.