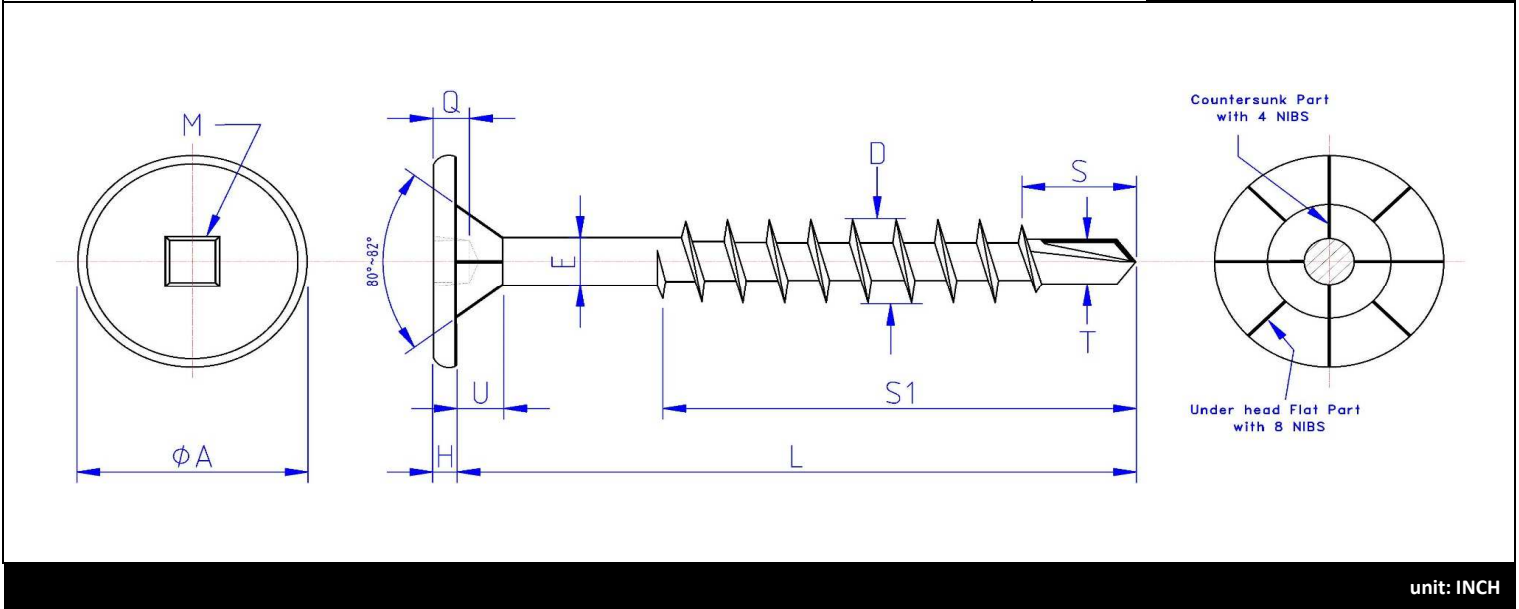




Brand	Root
	<b>FTKNCTZ...</b>



<b>L</b> LENGTH TOLERANCE	> 1-1/2" to ≤ 2-3/4"	+ 0	- 0.06
	> 2-3/4" to 5"	+ 0	- 0.09

<b>S1</b> THREAD LENGTH	<b>2/3 Thread</b>
-------------------------------	-------------------

SCREW SIZE	M PUNCH		Q DRIVE DEPTH	A HEAD DIAM.	H HEAD HEIGHT	U NECK HEIGHT	E BODY DIAM.	D THREAD DIAM.	S POINT LENGTH	T POINT DIAM.	THREAD PER INCH	TORK INCH/POUND
# 10	# 2	Min	0.060	ref.	Ref.	ref.	0.137	0.194	0.214	0.142	12	56
		Max	0.075	0.562	0.075	0.100	0.140	0.205	0.235	0.151		

Flat Top Head with Nibs, Square recess, Wood screw, Type 'TEK', Zinc Plated

Root= Flat Top socKet Nibs Coarse Tek Zinc

\* Lid color for Pail is RED (PMS485-C)

**Bulk Label Description:**

English: FLAT TOP HEAD WITH NIBS, SQUARE, COARSE THREAD, TYPE TEK, ZINC

French: TÊTE TOP PLATE AVEC NIBS, CARRÉ, GROS FILET, TYPE TEK, ZINC

Spanish: CABEZA PLANA "TOP" AUTORROSCANTE, CUADRADO, ROSCA GRUESA, PUNTA TIPO TEK, ZINC

Date : 28 février 2019

Done by : P.B.